

West Capitol Plaza

Former Grocery Store Available

1250-1298 W Capitol Ave
West Sacramento, CA 95691
www.cbre.com/sacramentodt

Join Planet Fitness & Rite Aid



West Capitol Plaza

1250-1298 W Capitol Ave | West Sacramento, CA 95691

Property Highlights

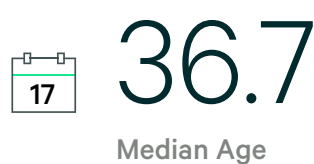
±34,860 SF Former Grocery Store Available

West Capitol Plaza is located in West Sacramento adjacent to the Bridge District and the Washington District - both comprised of single and multifamily housing. Center is the closest shopping center for all of the riverfront West Sacramento area.



- + Monument signage available
- + ±90,396 SF retail center located on the corner of W. Capitol Ave & Jefferson Blvd
- + Immediate proximity to Interstate 80 - only a few minutes from Downtown Sacramento
- + Neighboring retailers include: Walgreen's, Chase Bank, La Bou, H&R Block, Raley's, O'Reilly's, Autozone & US Bank
- + Center is adjacent to the Civic Center, Community Center, Community College, and Library

2022 Estimated Demographics - 3-Miles



Site Plan

Not to scale. All sizes are approximate.

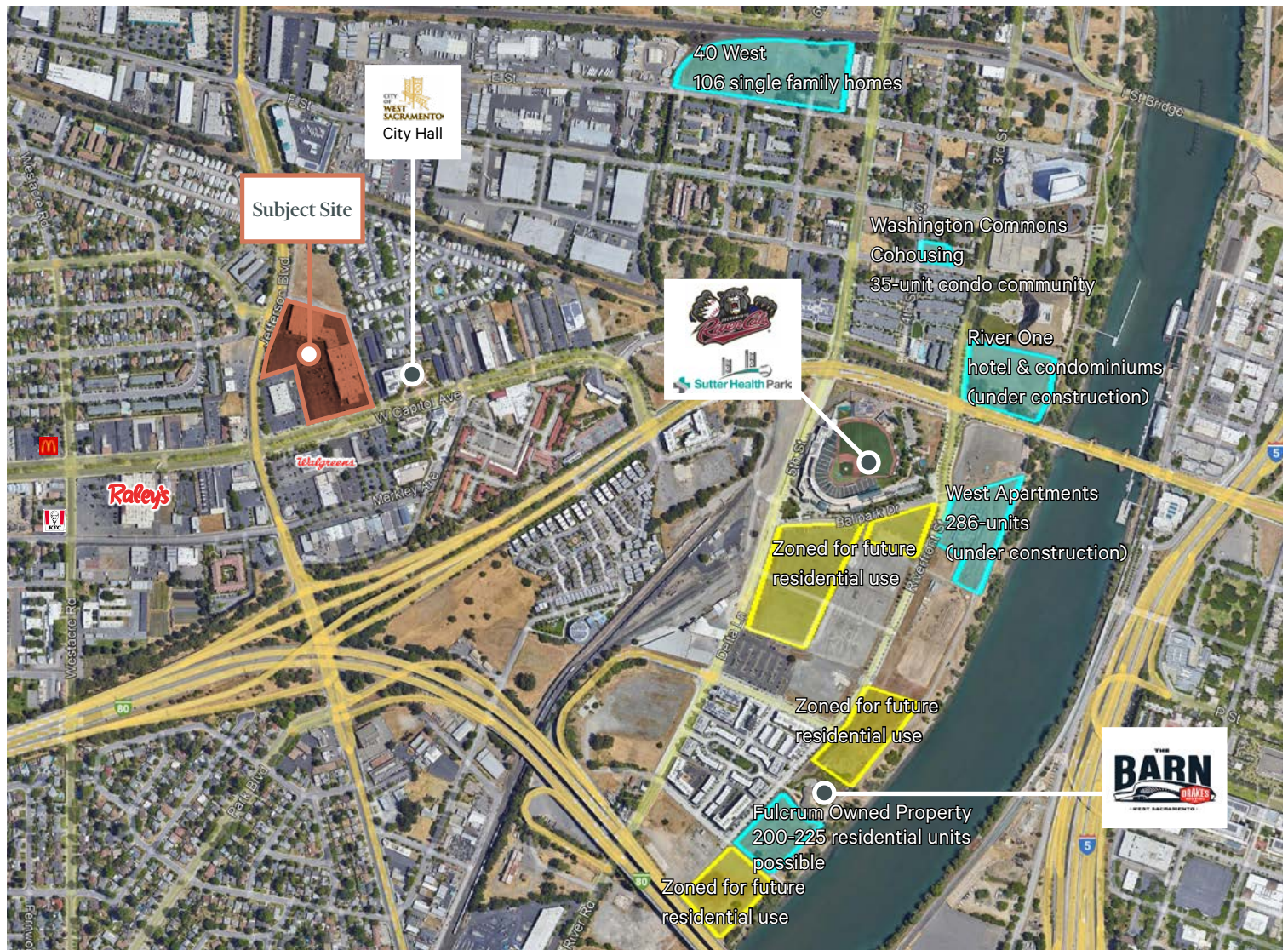
FUTURE BUILDING AREA*
*Exact size and location to be determined



West Capitol Plaza

1250-1298 W Capitol Ave | West Sacramento, CA 95691

For Lease



Contact Us

Chris Campbell

Executive Vice President
+1 916 446 8760
chris.campbell@cbre.com
Lic. 01204114

Jason Read

Senior Vice President
+1 916 446 8273
jason.read@cbre.com
Lic. 01341972

Scott Carruth

Senior Vice President
+1 916 446 8717
scott.carruth@cbre.com
Lic. 01372285

© 2022 CBRE, Inc. All rights reserved. This information has been obtained from sources believed reliable but has not been verified for accuracy or completeness. CBRE, Inc. makes no guarantee, representation or warranty and accepts no responsibility or liability as to the accuracy, completeness, or reliability of the information contained herein. You should conduct a careful, independent investigation of the property and verify all information. Any reliance on this information is solely at your own risk. CBRE and the CBRE logo are service marks of CBRE, Inc. All other marks displayed on this document are the property of their respective owners, and the use of such marks does not imply any affiliation with or endorsement of CBRE. Photos herein are the property of their respective owners. Use of these images without the express written consent of the owner is prohibited.