

AVAILABLE FOR SALE

15,201 SF FORMER ALDI

3400 BROADWAY, MT. VERNON, IL 62864

RETAIL



CONTACT US

Nick Garavaglia

Senior Associate
+1 314 655 5827
nick.garavaglia@cbre.com

CBRE

190 Carondelet Plaza
+1 314 655 6000
www.cbre.com/stlouis

www.cbre.com/stlouis

CBRE

AVAILABLE FOR SALE

15,201 SF FORMER ALDI

3400 BROADWAY, MT. VERNON, IL 62864

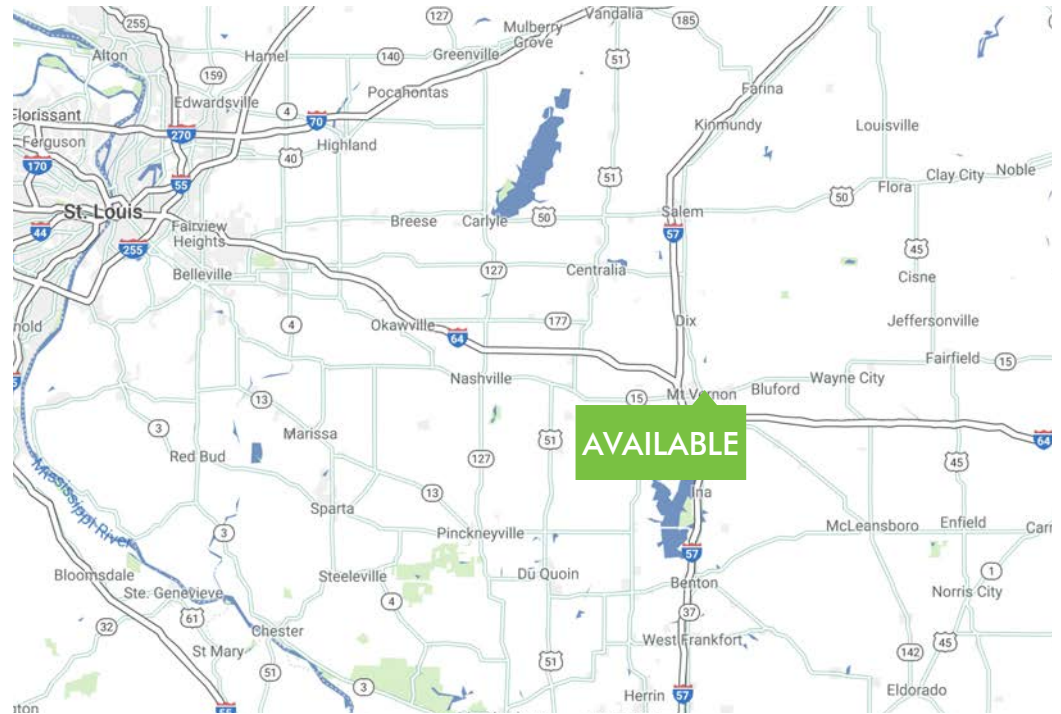
RETAIL



PROPERTY INFO

- + 15,201 SF former ALDI grocery store
- + Located adjacent to former KMart
- + Excellent visibility to Broadway
- + Mount Vernon is a fast growing community located at the crossroads of I-57 & I-64
- + New tenants in the market include: Menards, Starbucks, Panera & SSM Good Samaritan Hospital

CONTACT BROKER FOR PRICING



AREA DEMOGRAPHICS

	1 MILES	3 MILES	5 MILES
Population	5,767	15,252	19,420
Median Household Income	\$40,475	\$37,766	\$39,427
Average Household Income	\$61,354	\$58,652	\$60,461
Households	2,741	6,798	8,529

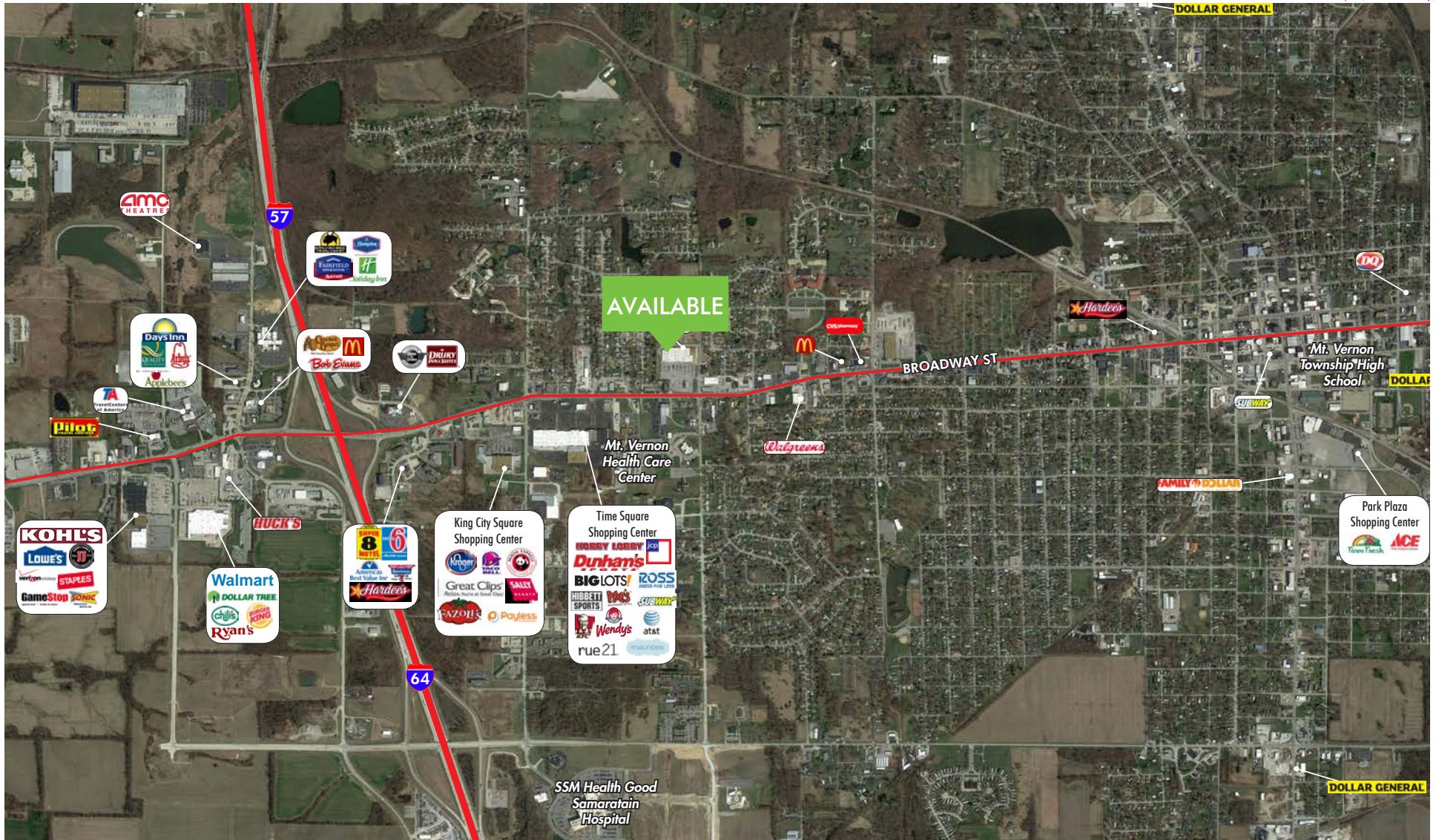


AVAILABLE FOR SALE

TRADE AREA AERIAL

3400 BROADWAY, MT. VERNON, IL 62864

RETAIL



© 2018 CBRE, Inc. All rights reserved. This information has been obtained from sources believed reliable, but has not been verified for accuracy or completeness. You should conduct a careful, independent investigation of the property and verify all information. Any reliance on this information is solely at your own risk. Photos herein are the property of their respective owners. Use of these images without the express written consent of the owner is prohibited. CBRE and the CBRE logo are service marks of CBRE, Inc. All other marks displayed on this document are the property of their respective owners.

CBRE